

The Introduction of Wet Application

Overseas Sales Department
Jack Song



CONTENTS



The foundation of wet application



The introduction of wet application



Pave waterproof membrane with wet application



International waterproofing projects with wet application

CONTENTS



The foundation of wet application



The introduction of wet application

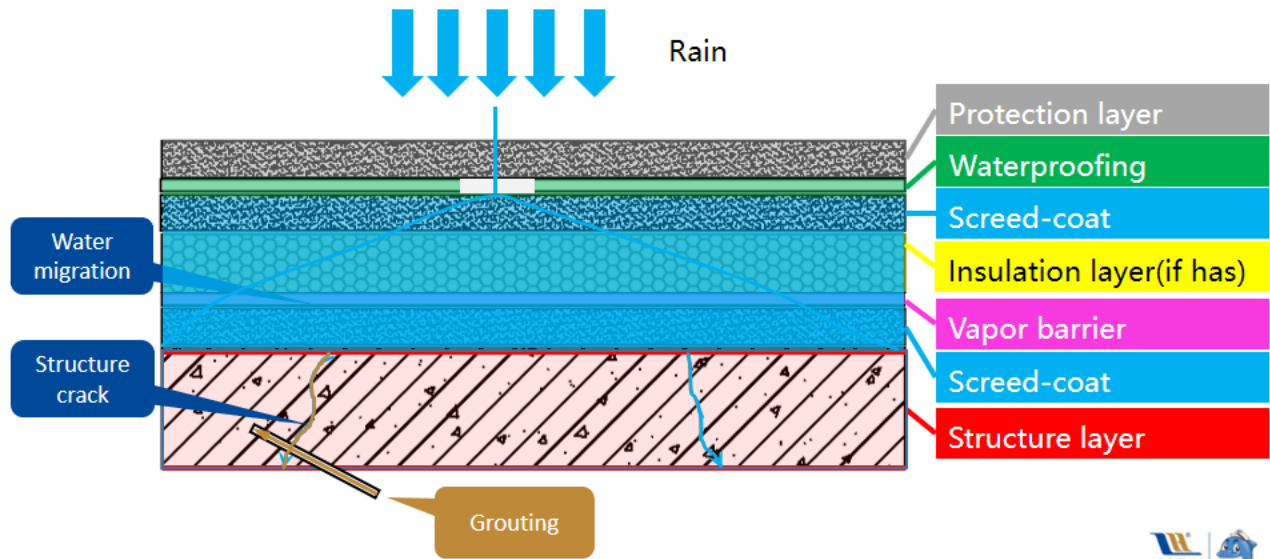


Pave waterproof membrane with wet application



International waterproofing projects with wet application

Raincoat type waterproofing concept



Three conditions for leakage

1

damaged points in the waterproofing

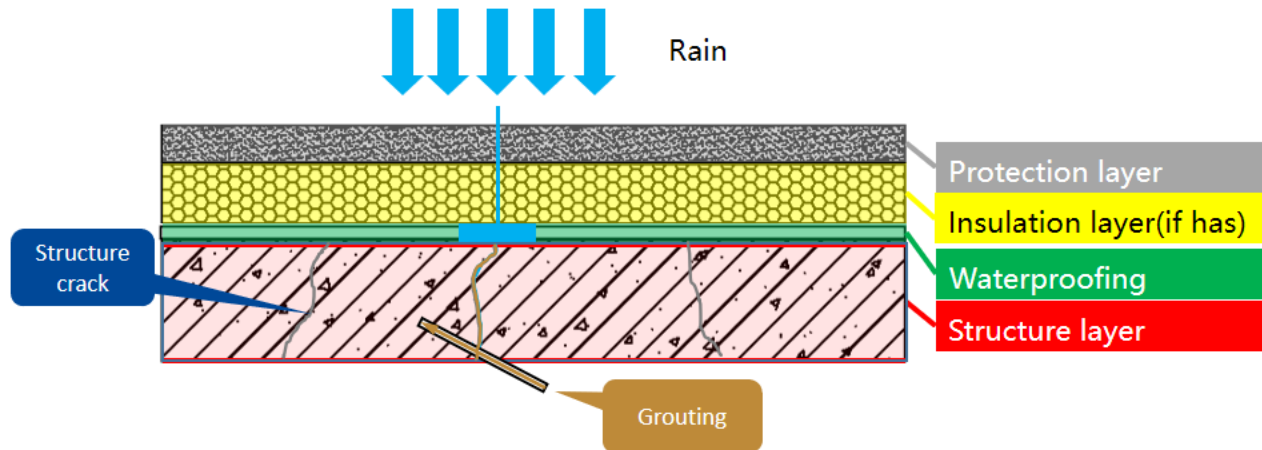
2

cracks in the structure

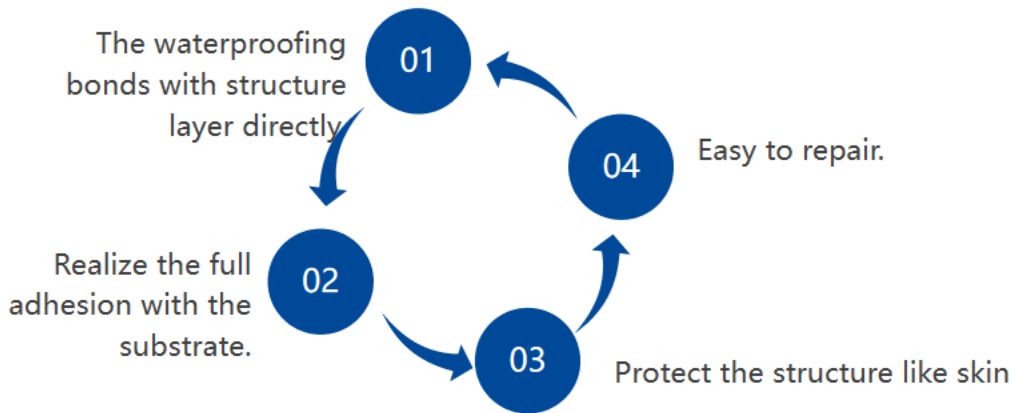
3

water migration

Skin type waterproofing concept



Features of skin type waterproofing



CONTENTS

1

The introduction of
skin type
waterproofing

2

The introduction of wet
application

3

Pave waterproof
membrane with wet
application

4

International
waterproofing projects
with wet application

The introduction of wet application

Concept

Construction technology
Use cement slurry, cement mortar, or specific mortar

History

Created by Joaboa Tech in 2004
Achieve great success and widely used

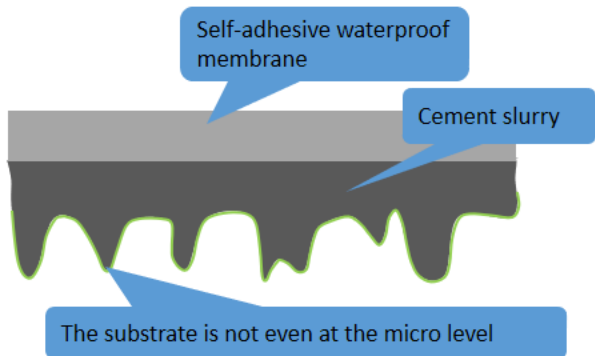
Application

Bond waterproof membrane

Advancement

Realize the skin type waterproofing

Structure diagram for wet application



1. The substrate is **not even at the micro level**.
2. Use the cement slurry as the bonding material.
3. The cement slurry can fill the interspaces between the substrate and the membrane.
4. Effectively eliminate the **water migration** between the membrane and the substrate.

The advantages of wet application

01

SAVE COST

No need to construct screed-coat.

02

SHORTEN PERIOD

Be constructed on the moisture substrate to ensure the construction period.

03

SAFETY

Apply without fire to ensure the construction safety.

04

ECO-FRIENDLY

The materials are friendly to the environment.

The requirement of substrate



Cleanness

- Clean
- No sand and dust
- No garbage



Solidness

- Solid
- No hollowing
- No sanding



Flatness

- Basically even
- The gap between the 2-meter ruler is less than 5mm
- The amount is less than 1 per meter



Moisture content

- Low requirement
- Wet the substrate if too dry
- Sweep off the obvious water

The pavement order



The basic rules

- The previous construction shouldn't affect the subsequent one
- The construction order should be high efficiency



Overall pavement order

- From far to near
- First the details, then the large area



The application of plane and elevation

- First the elevation, then the plane
- First the corner, and then the large area of elevation



Cement slurry

For plane

Weight ratio of
cement :water is
 ≤ 0.45

For elevation

Weight ratio of
cement: water: glue
power= 1:0.4:4‰

Prepare the mixer

Stir the mixer with
motor stirrer until
no parcels

Usage period

The mixer should
be used within
one hour.

CONTENTS

1

The introduction of
skin type
waterproofing

2

The introduction of wet
application

3

Pave waterproof
membrane with wet
application

4

International
waterproofing projects
with wet application

The Range of Application

1. Polymer film base

2. Reinforced Polyester base(Type PY)

Single side self adhesion (S)

Double side self adhesion (D)



- ◆ Basement, roof and swimming pool.
- ◆ Bond Joaboa BAC, BAC-P, CLF and PET self-adhesive waterproof membrane.

The process of application-for the horizontal plane

■ Clean the substrate



- ◆ Clean the substrate.
- ◆ Basically even is OK.
- ◆ Sweep off the obvious water

The process of application-for the horizontal plane

■ Wet the substrate



- ◆ Prevent the cement slurry from losing water quickly .

The process of application-for the horizontal plane

■ Coat the cement slurry



- ◆ Weight ratio of water: cement ≤ 0.45
- ◆ 2-3mm thickness

The process of application-for the horizontal plane

■ Pave the membrane



- ◆ Remove the lower isolation film of the membrane
- ◆ Bond it on the coated substrate with the cement slurry.

The process of application-for the horizontal plane

- Exhaust the air between membrane & substrate



- ◆ Exhaust the air between membrane & substrate with wooden float or paper core.

The process of application-for the horizontal plane

■ Overlap in side and end



- ◆ Remove the isolation film both of the lap joints.
- ◆ Exhaust the air with small roller or paper core.
- ◆ The width of overlap is 8cm.

The process of application-for the side wall



- ◆ Coat the cement slurry on the wall , on the membrane, or both of them.
- ◆ Pave the membrane on the wall.
- ◆ Exhaust the air with wooden float or paper core.

CONTENTS



The introduction of
skin type
waterproofing



The introduction of wet
application



Pave waterproof
membrane with wet
application



International
waterproofing projects
with wet application

The feature of Southeast Asia

The climate

The rain season lasts for 6 months

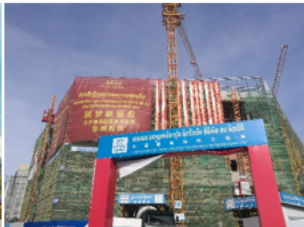
The rain is always heavy and long-lasting time

The projects

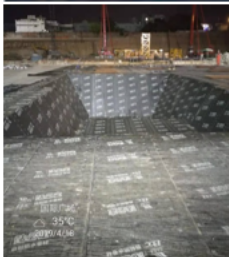
The construction materials are in high price which makes the building cost higher

Many projects are in poor condition of the substrate

Prince Headquarter Building, Cambodia



Prince International Plaza, Cambodia



Zhongtian Number One, Phase 1, Thailand





THANK YOU
Joaboa Tech, building the splendid
home with you together.